

SNAG CANYON BLA
SEC. 30, T. 18 N., R. 20 E., W.M.
TPNS 374136 & 364136

CARIBOU RD

ACCESS ESM'T
AFN 202004030007

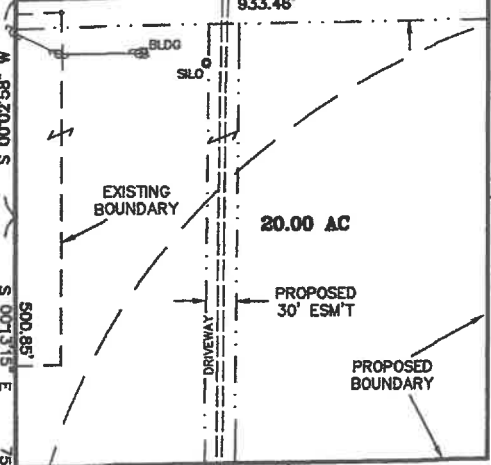
PROPOSED 80' ESM'T

N 89°18'27" E 2662.73'

1729.27'

PIVOT
BASE

433.14'
S 00°02'58" W
500.85'
S 07°13'18" E
759.55'
258.71'
S 00°09'18" E
31.600'
378.34'
S 02°26'31" W
492.64'
S 02°10'29" W
S 03°07'57" W
195.38'



20.00 AC

PROPOSED
30' ESM'T

PROPOSED
BOUNDARY

IRRIGATION
CIRCLES

143.10 AC

PIVOT
BASE

S 00°08'49" E
2705.96'
DITCH

WELL ID
#A0L821

IRRIG
STRUCTURE

KRD R/W

CONC
WEIR
PIVOT
GATE

S 89°29'37" W

2698.91'